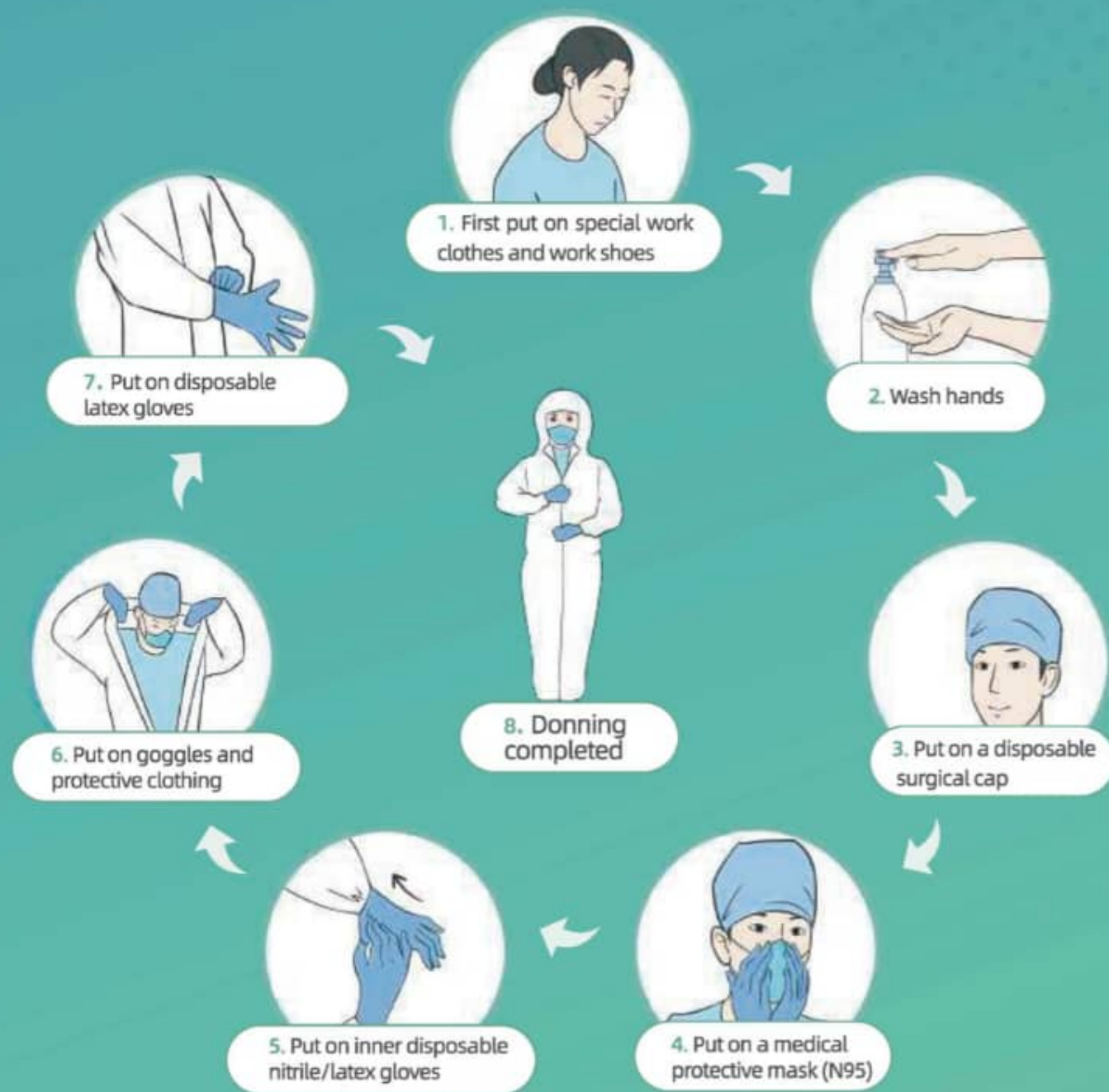


# 1 Guidance on Donning and Removing Personal Protective Equipment (PPE) to manage COVID-19 Patients



## Protocol for Donning PPE:

Put on special work clothes and work shoes → Wash hands → Put on disposable surgical cap → Put on medical protective mask (N95) → Put on inner disposable nitrile/latex gloves → Put on goggles and protective clothing (note: if wearing protective clothing without foot covers, please also put on separate waterproof boot covers), put on a disposable isolation gown (if required in the specific work zone) and face shield/powered air-purifying respirator (if required in the specific work zone) → Put on outer disposable latex gloves